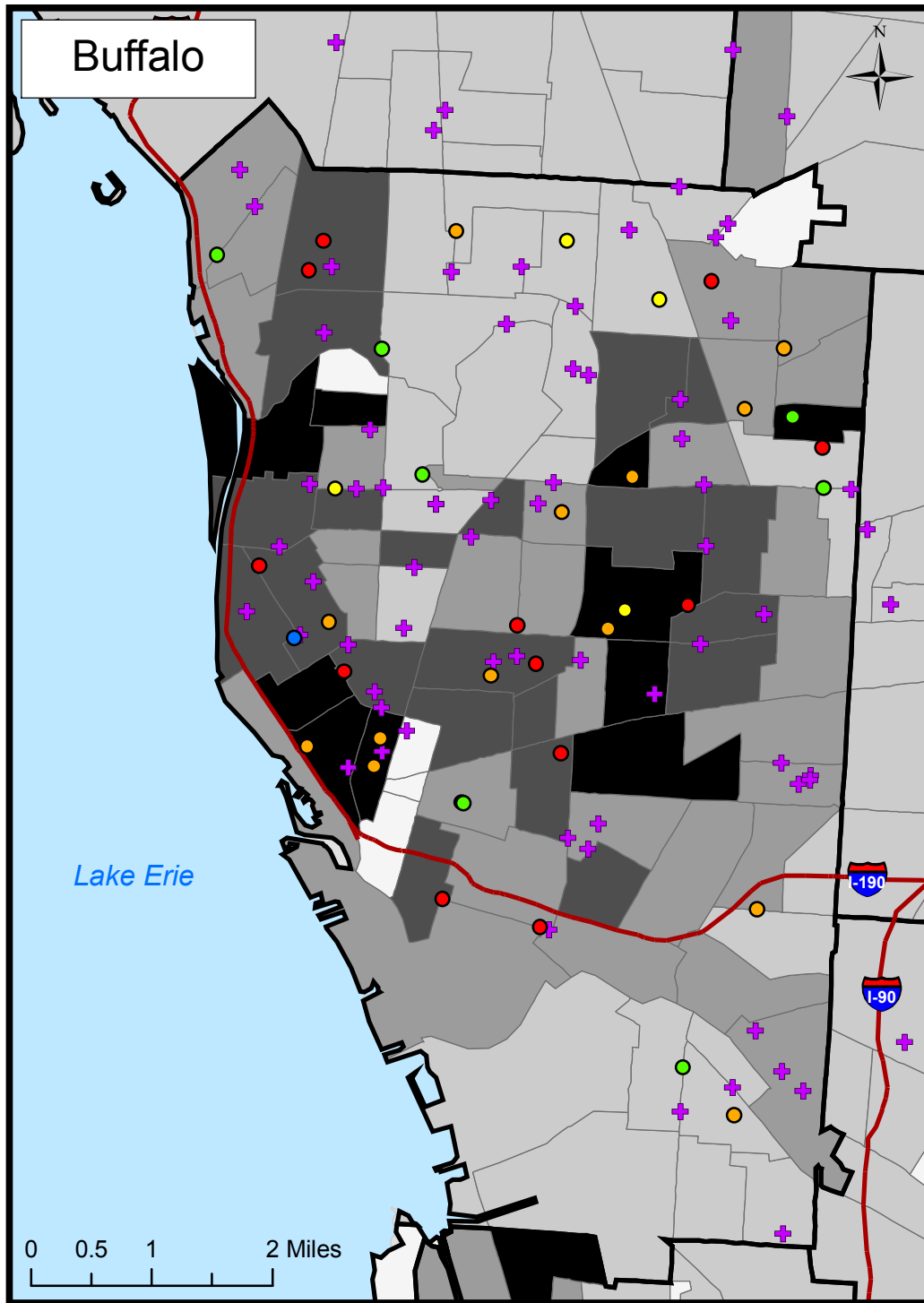
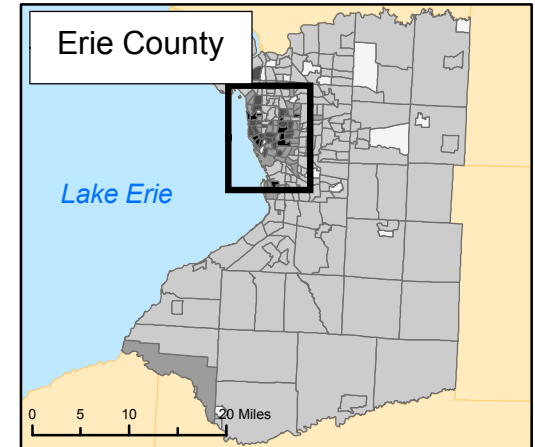


# Potential Summer Food Service Program (SFSP) Locations

Hunger Action Network  
OF NEW YORK STATE



## Church



## Schools' Eligibility\* to become a SFSP Location

- 59% - 60%
- 61% - 70%
- 71% - 80%
- 81% - 90%
- 91% - 100%

## Families with Children <18yr Below Federal Poverty Level

- 0%
- 1% - 25%
- 26% - 40%
- 41% - 50%
- 51% - 100%

\*Eligibility based on the number of students receiving free or reduced lunch during the academic year.

Source: Nutrition Consortium of NYS (adapted from NYS Department of Education data), Census Bureau 2000.

Map created by Jennifer Perrone, Syracuse University Community Geography